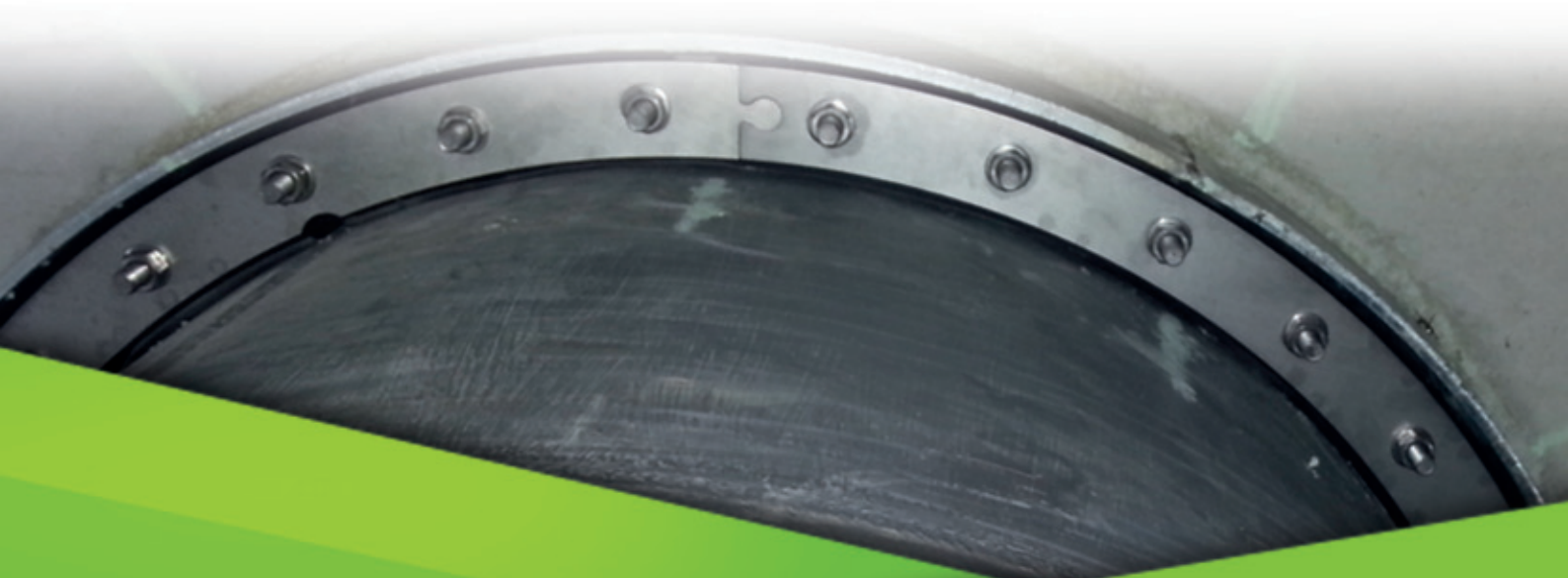




Pipeline Accessories

Wall Penetration Seals
4 pipes



Pressio®-Rings Wall Penetration Seals 4 pipes



The high performance pipeline wall penetration seal



Drinking water
KTW/W270



MFPA
tested



Product information

Pressio®-Rings Seals work as high quality seals against high and low external water pressure in wall penetrations of pipes and cables.

Pressio® Seals are the most secure type for sealing wall penetrations for pipelines. This seal is basically tight against high and low external water pressure with pressure plates made of V2A stainless steel and extra soft rubber.

Usage

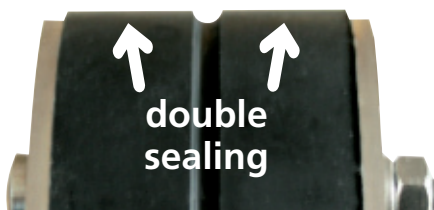
Gas and water tight closure between carrier and casing pipe or core hole with a 40 mm thick rubber element (alternatively with two 40 mm rubber elements) which is compressed between 2 steel discs.

Approval and test

- Pressure tight up to 5.0 bar*
 - Drinking water quality acc. to DVGW W270, Elastomer Guideline of UBA/KTW
 - Radon tight
- *from 3 bar on, the seal has to be secured to prevent movement.

Advantages

- fast mounting
- can be produced individually according to customer requirements
- usable at various building and plant applications
- pressure plates are made of stainless steel
- suitable for applications with high or low external water pressure
- Special elastomers possible, e.g. potable water EPDM or nitrile for gas or oil resistance



Installation

1. Clean casing pipe/core bore and pipe.
2. Check casing pipe/core bore diameter and carrier pipe diameter with sealing range written on the Pressio seal.
3. Insert Pressio Seal into the wall and push pipe through. Pressio shall be placed towards the outside of the building, with nuts towards the inside for later retightening.
4. Use a torque wrench to tighten nuts in a clockwise pattern with torque value according to table below. Each nut shall be turned approx. three times, several passes will be necessary.

Advice:

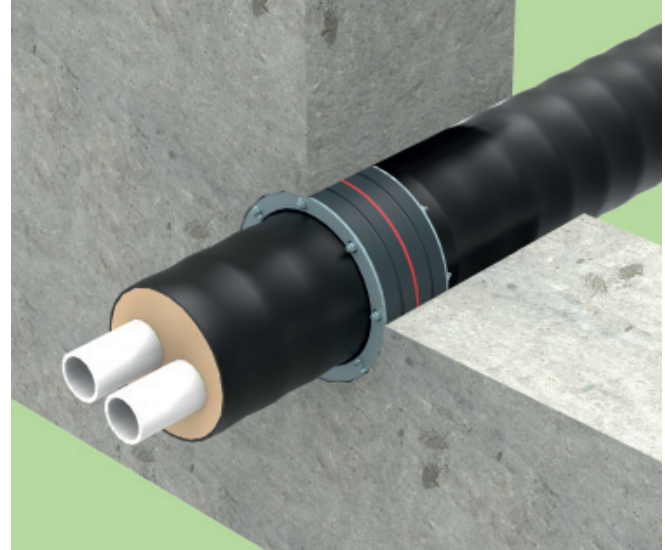
- Core bore should be coated with epoxy to protect the concrete and smoothen any possible cavities/grooves
- For retrofit installation a split Pressio® Seal is available
- Pipes have to be centered and supported
- Pressio® are not suitable as mechanical pipe supports or anchor points!

Bolt diameter	Max. torque tightening in Nm	
	Standard pipes	For thin walled plastic pipes
M 6	5 Nm	5 Nm
M 8	10 Nm for Pressio® Standard, Standard split version and Standard Type FW	8 Nm for Pressio® Standard, Standard split version and Standard Type FW
	20 Nm for Pressio® Individual and Pressio® Type KTW/W270	15 Nm for Pressio® Individual
M 10	30 Nm	22 Nm
M 12	36 Nm	26 Nm

Pressio®-Rings FW-Wall Penetration Seals 4 pipes



Preinsulated pipe wall penetration seal 2x40 mm Special design for district heating and cooling pipes



Product information

Pressio®-Rings FW-Wall Penetration Seals are engineered for flexible and PE-jacket preinsulated pipe systems.

- Available in special preinsulated pipe dimensions
- In 2x40 mm and 1x40 mm version
- Extra soft rubber allows **low tightening torque** with low danger of pipe deformation
- Special dimensions consider the pipe tolerances of the EN253 and e.g. the ovalities of flexible pipes
- MFPA certified up to 5 bar pressure
- Individual dimensions possible
- Facilitates minimal pipe movement and angling

Installation

1. Clean casing pipe/core bore and pipe.
2. Check casing pipe/core bore diameter and pipe diameter with the data on the sealing kit.
3. Insert Pressio Seal into the wall and push pipe through. Mount sealing kit on the outside of the building with direction of nuts inside to enable later retightening.
4. Use a torque wrench to tighten nuts in a clockwise pattern with torque value according to table below. Each nut shall be turned approx. three times, several passes will be necessary.

Advice:

- Core hole should be coated with epoxy to protect the concrete and smoothen any possible cavities/grooves
- For retrofit installation a split Pressio® Seal is available
- Pipes have to be centered and supported
- Pressio® are not suitable as mechanical pipe supports or anchor points!



Pressio®-Rings 2 x 40 mm
Rubber with 2 x 16 mm
extra holes including
reducing insert and
blind plug







Pressio®-Rings 1 x 40 mm
Rubber with 2 x 16 mm
extra holes including
reducing insert and
blind plug

Max. torque tightening in Nm		
Bolt diameter	Standard pipes	For thin walled plastic pipes
M 6	5 Nm	5 Nm
M 8	10 Nm for Pressio® Standard, Standard split version and Standard Type FW	8 Nm for Pressio® Standard, Standard split version and Standard Type FW
	20 Nm for Pressio® Individual and Pressio® Type KTWW270	15 Nm for Pressio® Individual
M 10	30 Nm	22 Nm
M 12	36 Nm	26 Nm

Pressio®-Rings Wall Penetration Seals 4 pipes



Pressio® seals are designed to withstand high external water pressure

			Standard	Split version	District heating
Standard dimensions				 	
Core hole/ wall sleeve	Carrier pipe OD in mm		Stainless steel pressure plates bolts V2A Rubber size 1 x 40 mm Rubber: EPDM	Stainless steel pressure plates, <i>split</i> Version, bolts V2A Rubber size 1 x 40 mm Rubber: EPDM	Stainless steel pressure plates bolts V2A <i>Rubber size 2x40 mm</i> Rubber: EPDM
	mm	min. max.	Art.-No.	Art.-No.	Art.-No.
50	6	12	10500	10600	*
70	10	22	10505	10605	*
70	24	32	10506	10606	*
70	32	41	10507	10607	*
80	20	28	10510	10610	*
80	28	32	10514	10614	*
80	32	40	10511	10611	*
80	40	50	10512	*	
100	15	22	10515	10615	*
100	20	28	10516	10616	*
100	25	32	10517	10617	*
100	32	40	10518	10618	*
100	36	44	10519	10619	*
100	41	51	10489	*	*
100	46	56	10520	10620	*
100	55	65	10521	10621	*
125	35	40	10523	10623	
125	45	50	10524	10624	
125	55	64	10525	10625	*
125	61	70	10526	10626	10700
125	70	78	10527	10627	10701
150	35	40	10529	10629	*
150	46	54	10530	10630	*
150	56	66	10531	10631	10704
150	69	78	10532	10632	10705
150	79	91	10533	10633	10708
150	85	94	10534	10634	10706
150	90	97	10536	*	*
150	98	110	10535	10635	10707
150	110	114.3	10537	10637	10762
187**	69	78	01563	01663	10763
187**	88	103	01564	01664	10764
187**	108	115	01565	01665	10765
187**	119	128	01566	01666	10766
187**	135	144	01567	01667	10767
200	88	103	10540	10640	10709
200	108	115	10541	10641	10710
200	116	126	10542	10642	10713
200	119	128	10543	10643	10711
200	125	135	10547	*	10760
200	132	141	10544	10644	*
200	135	144	10545	10645	10712
200	140	150	10548	*	10761
200	150	160	10546	10646	10714

*Available on request / Pressio® Individual special version up to DN 3000 on request

**made for KG/KG2000 casing pipes



Pressio®-Rings Wall Penetration Seals 4 pipes



Pressio® seals are designed to withstand high external water pressure

Standard dimensions			Standard	Split version	District heating
				 	
Core hole/ wall sleeve	Carrier pipe OD in mm		Stainless steel pressure plates Bolts V2A Rubber size 1 x 40 mm Rubber: EPDM	Stainless steel pressure plates, <i>split</i> Version, bolts V2A Rubber size 1 x 40 mm Rubber: EPDM	Stainless steel pressure plates bolts V2A <i>Rubber size 2x40 mm</i> Rubber: EPDM
	mm	min.	max.	Art.-No.	Art.-No.
250	135	144	10550	10650	10715
250	140	149	10551	10651	10716
250	150	159	10552	10652	10717
250	156	165	10553	10653	10718
250	165	175	10554	10654	10721
250	174	181	10555	10655	10719
250	178	187	10556	10656	10720
250	197	202	10557	10657	10722
250	204	210	10558	10658	*
300	178	187	10565	10665	10725
300	193	204	10566	10666	10726
300	198	207	10567	10667	10727
300	218	226	10568	10668	10728
300	224	233	10564	10664	10724
300	242	251	10569	10669	*
350	224	233	10570	10670	10730
350	233	243	10574	10674	10759
350	249	258	10571	10671	10731
350	270	282	10572	10672	*
350	279	288	10573	10673	10733
400	270	280	10575	10675	*
400	279	288	10576	10676	10735
400	304	313	10577	10677	10736
400	314	323	10578	10678	10737
400	320	330	10579	10679	10738
500	354	364	01582	01682	10750
500	392	402	01583	01683	*
500	400	412	01584	01684	10751
500	421	431	01585	01685	*
600	450	464	01588	01688	10755
600	494	504	01589	01689	*
600	500	515	01590	01690	10756
600	524	534	01591	01691	*




* Available on request/ Pressio® Individual special version up to DN 3000 on request

Sealing range cable outlet 8 - 10 mm with insert 14 - 16 mm without insert			Pressio®-Rings with 2 x 16 mm extra outlet incl. insert and blind plug Rubber width 1 x 40 mm Rubber: EPDM		Pressio®-Rings with 2 x 16 mm extra outlet incl. insert and blind plug <i>Rubber width 2 x 40 mm</i> Rubber: EPDM	
OD	Carrier pipe		Art.-No.	Art.-No.		
mm	min.	max.				
150	69	78	01500	01700		
150	85	94	01501	01701		
200	108	115	01502	01702		
200	119	128	01503	01703		
200	135	144	01504	01704		
250	156	165	01505	01705		
250	178	187	01506	01706		
300	193	204	01507	01707		
300	224	233	01508	01708		

Pressio®-Rings Wall Penetration Seals 4 pipes



Pressio® seals are designed to withstand high external water pressure

			V4A / 1.4571	Drinking water	Blind
Standard dimensions					
Core hole/ wall sleeve	Carrier pipe OD in mm		Stainless steel pressure plates and bolts V4A rubber: EPDM	Stainless steel pressure plates and bolts V2A, rubber: EPDM with KTW/W 270 approval**	Blind stainless steel pressure plates, bolts V2A rubber: EPDM
	mm	min.	max.	Art.-No.	Art.-No.
50	6	12	10300	10800	10585
70	10	22	10305	10805	10586
70	24	32	10306	10806	
70	32	41	10307	10807	
80	20	28	10310	10810	10587
80	32	40	10311	10811	
100	15	22	10315	10815	10596
100	20	28	10316	10816	
100	25	32	10317	10817	
100	32	40	10318	10818	
100	36	44	10319	10819	
100	46	56	10320	10820	
100	55	65	10321	10821	
125	55	64	10325	10825	
125	61	70	10326	10826	
125	70	78	10327	10827	
150	46	54	10330	10830	10598
150	56	66	10331	10831	
150	69	78	10332	10832	
150	79	91	10333	10833	
150	85	94	10334	10834	
150	98	110	10335	10835	
200	88	103	10340	10840	10591
200	108	115	10341	10841	
200	116	126	10342	10842	
200	119	128	10343	10843	
200	125	135	*	*	
200	132	141	10344	10844	
200	135	144	10345	10845	
200	140	150	*	*	
200	150	160	10346	10846	10592
250	135	144	10350	10850	
250	140	149	10351	10851	
250	150	159	10352	10852	
250	156	165	10353	10853	
250	165	175	10354	10854	
250	174	181	10355	10855	
250	178	187	10356	10856	
250	197	202	10357	10857	
250	204	210	10358	10858	




* Available on request / Pressio® individual special version up to DN 3000 on request
Rubber quality: NBR and KTW/W270 for Pressio seal with split version on request

** according to DVGW W270, Elastomer Guideline of UBA / KTW
Attention: non-stock item

Pressio®-Rings Wall Penetration Seals 4 pipes



Pressio® seals are designed to withstand high external water pressure

			V4A / 1.4571	Drinking water	Blind
Standard dimensions					
Core hole/ wall sleeve	Carrier pipe OD in mm		Stainless steel pressure plates and bolts V4A rubber: EPDM	Stainless steel pressure plates and bolts V2A, rubber: EPDM with KTW/W 270 approval**	Blind stainless steel pressure plates, bolts V2A rubber: EPDM
	mm	min. max.			
300	178	187	10365	10865	10593
300	193	204	10366	10866	
300	198	207	10367	10867	
300	218	226	10368	10868	
350	224	233	10370	10870	10594
350	249	258	10371	10871	
350	270	282	10372	10872	
400	270	280	10375	10875	10595
400	279	288	10376	10876	
400	304	313	10377	10877	
400	314	323	10378	10878	
400	320	330	10379	10879	
500	354	364	01382	10882	*
500	392	402	01383	10883	
500	400	412	01384	10884	
500	421	431	01385	10885	
600	450	464	01388	10888	*
600	494	504	01389	10889	
600	500	515	01390	10890	
600	524	534	01391	10891	

*Available on request / Pressio® individual special version up to DN 3000 on request
Rubber quality: NBR and KTW/W270 for Pressio® seal with split version on request

** according to DVGW W270, Elastomer Guideline of UBA / KTW
Attention: non-stock item

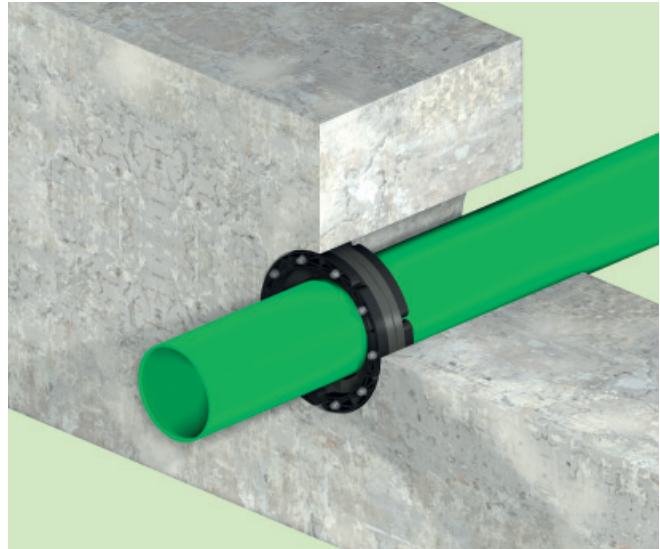


[Installation video](#)

Pressio®-Rings BlackLine Wall Penetration Seals 4 pipes



tight up to
1.5 bar



Product information

Pressio® Rings BlackLine is our new series of sealing rings with pressure plates made from glass-fibre reinforced polyamide. They are used to seal wall penetrations for pipes and cables against high or low external water pressure. Pressio® Rings are the most secure way of sealing wall penetrations for pipelines.

Usage

Gas and water tight closure between carrier and casing pipe or core hole with a 40 mm thick rubber element (alternatively with two 40 mm rubber elements) which is compressed between two polymer pressure plates.

Approval and test

- pressure tight up to 1.5 bar
- tight against radon gas

Advantages

- fast and easy installation
- pressure plates made from high strength polyamide PA6-30
- tight against high external water pressure
- Split seal can be used for retrofit application
- offset pressure plate placement allows very simple retrofit installation

Installation

1. Clean casing pipe/core bore and pipe.
2. Check casing pipe/core bore diameter and carrier pipe diameter with sealing range written on the Pressio seal..
3. Insert Pressio Seal into the wall and push pipe through. Pressio shall be placed towards the outside of the building, with nuts towards the inside for later retightening.
4. Use a torque wrench to tighten nuts in a clockwise pattern with torque value according to table below. Each nut shall be turned approx. three times, several passes will be necessary.

Max torque tightening in Nm			
bolt size	height pressure plate	for standard pipes	for thin walled plastic pipes
M6	18 mm	5 Nm	5 Nm
M8	22 mm	10 Nm	8 Nm




Advice:

- Core bore should be coated with epoxy to protect the concrete and smoothen any possible cavities/grooves
- Pressio Blackline are split and can be used for retrofit installation simply by removing one bolt to open them
- Pipes have to be centered and supported
- Pressio Blackline sealing rings are not suitable as mechanical pipe supports or anchor points

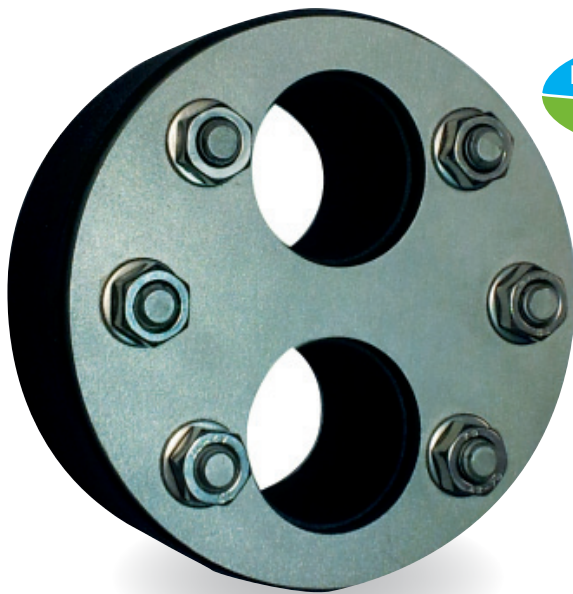
The 4 pipes warranty only applies to faulty material. Checking the suitability of the product for the individual application is solely the responsibility of the user.

Pressio®-Rings BlackLine Wall Penetration Seals 4 pipes



Pressio® seals are designed to withstand high external water pressure						
Core hole/ wall sleeve	Carrier pipe OD in mm		Pressure plates PA6-30 split version bolts S316 Ti rubber 1 x 40 mm EPDM	Pressure plates PA6-30 split version bolts S316 Ti rubber 2 x 40 mm EPDM	Blind Pressure plates PA6-30 bolts S316 Ti rubber 1 x 40 mm EPDM	
	mm	min.	max.	Art.-No.	Art.-No.	
80	20	28	55610	-	55587	
80	28	32	55614	-		
80	32	40	55611	-		
80	40	50	55612	-		
100	20	28	55616	-	55588	
100	25	32	55617	-		
100	32	40	55618	-		
100	36	44	55619	-		
100	46	56	55620	-		
100	55	65	55621	-		
125	55	64	55625	-	55589	
125	61	70	55626	55700		
125	70	78	55627	55701		
150	46	54	55630	-	55590	
150	56	66	55631	55704		
150	69	78	55632	55705		
150	79	91	55633	55708		
150	85	94	55634	55706		
150	90	97	55636	-		
150	98	110	55635	55707		
200	108	115	55641	55710		55591
200	116	126	55642	55713		
200	119	128	55643	55711		
200	132	141	55644	-		
200	135	144	55645	55712		
200	150	160	55646	55714		
250	135	144	55650	55715	-	
250	140	149	55651	55716		
250	150	159	55652	55717		
250	156	165	55653	55718		
250	165	175	55654	55721		
250	174	181	55655	55719		
250	178	187	55656	55720		
250	197	202	55657	55722		
250	204	210	55658	-		
300	178	187	55665	55725		-
300	193	204	55666	55726		
300	198	207	55667	55727		
300	218	226	55668	55728		
300	224	233	55664	55724		
350	249	258	55671	55731	-	
350	270	282	55672	-		

Your custom-made Pressio® wall penetration seal



Drinking water
KTW/W270



tight up to
1.5 bar



Product information

Pressio® Individual Seals are engineered and custom-made at 4 pipes to solve individual problems on site.

Production options

- Multiple seals
- Oval/square outside
- Not centered
- Split or closed possible
- Dimensions up to DN 3000 possible
- Standard elastomer EPDM
- Special elastomers available (NBR, Viton, Silicone etc.) for e.g.
 - high temperatures
 - Chemicals
 - Oils/natural gas
 - potable water etc.
- Width 1x40 mm or 2x40 mm
- Pressure plates in various stainless steel qualities available
- To optimise production and functioning, we need your input. Please refer to the template on the next page and consider all details.

Attention: fast delivery!

Express production is available at a premium.

The 4 pipes warranty only applies to faulty material. Checking the suitability of the product for the individual application is solely the responsibility of the user.

Installation

1. Clean casing pipe/core bore and pipe.
2. Check casing pipe/core bore diameter and carrier pipe diameter with sealing range written on the Pressio seal..
3. Insert Pressio Seal into the wall and push pipe through. Pressio shall be placed towards the outside of the building, with nuts towards the inside for later retightening.
4. Use a torque wrench to tighten nuts in a clockwise pattern with torque value according to table below. Each nut shall be turned approx. three times, several passes will be necessary.

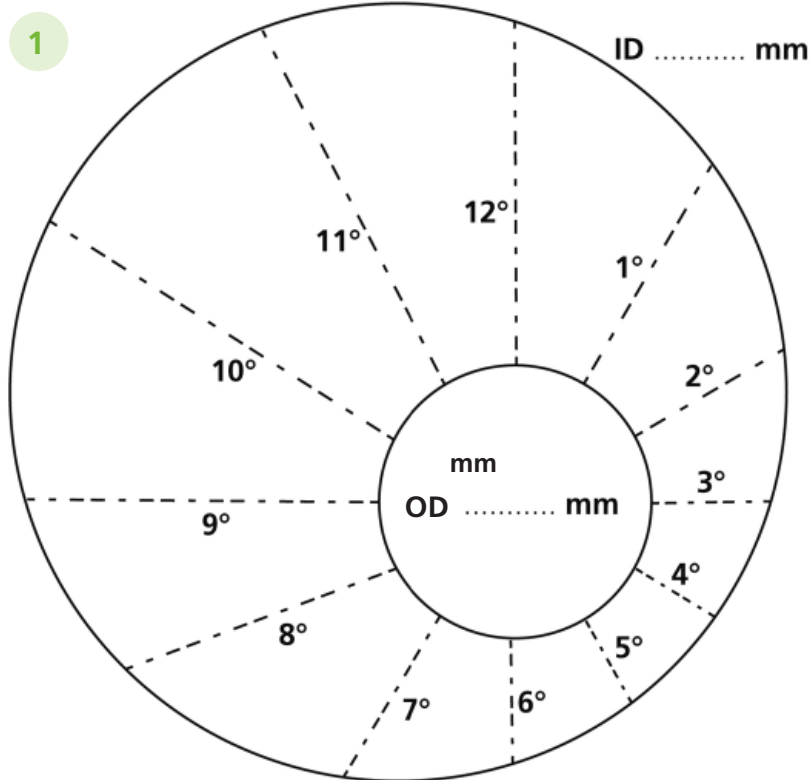
Advice:

- Core bore should be coated with epoxy to protect the concrete and smoothen any possible cavities/grooves
- For retrofit installation a split Pressio® Seal is available
- Pipes have to be centered and supported
- Pressio® are not suitable as mechanical pipe supports or anchor points!

Max. torque tightening in Nm		
Bolt diameter	Standard pipes	For thin walled plastic pipes
M 6	5 Nm	5 Nm
M 8	10 Nm for Pressio® Standard, Standard split version and Standard Type FW	8 Nm for Pressio® Standard, Standard split version and Standard Type FW
	20 Nm for Pressio® Individual and Pressio® Type KTW/W270	15 Nm for Pressio® Individual
M 10	30 Nm	22 Nm
M 12	36 Nm	26 Nm

Pressio® Individual Wall Penetration Seals 4 pipes

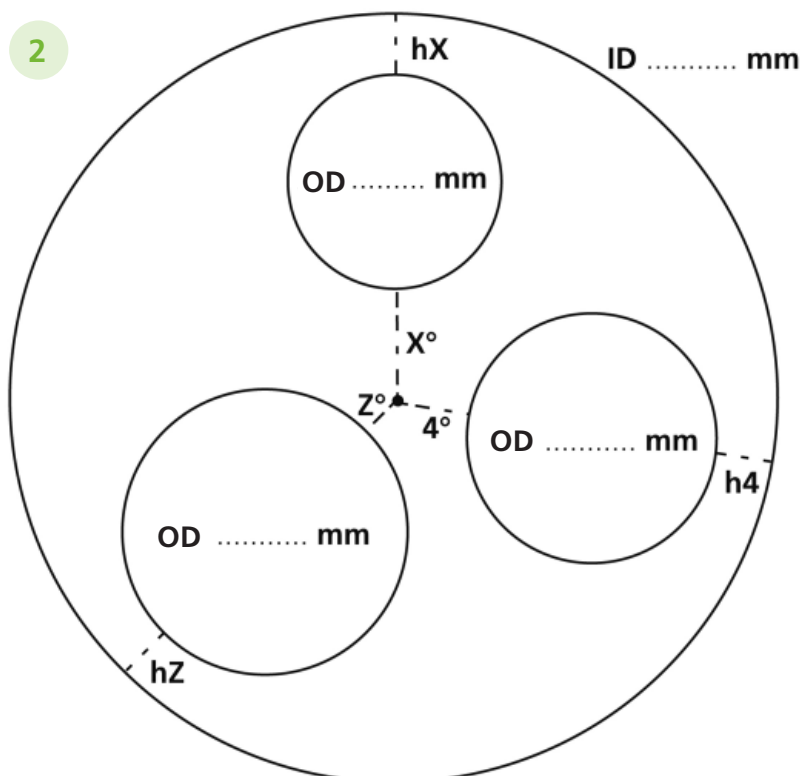
Example of a Template



Guideline technical input:

- Rubber
 - 1 x 40 mm
 - 2 x 40 mm
- Elastomer
 - EPDM
 - Nitrile
 - Viton
 - EPDM-KTW (drinking water)
 - Silicone
- Pressure plates
 - V2A
 - V4A / 1.4571
 - Steel spec.
- Dimension
 - split
 - closed
 - oversize flange
- Kind of pipe
- Tolerances
- Crane eyelet
- Handles

Please provide your original measured sizes so 4 pipes can design your seal with the correct cutting dimensions.



Pressio® Wall Penetration Seals 4 pipes

Character	Pressio® Seal Standard EPDM	Pressio® Seal for drinking water	Pressio® Seal for preinsulated pipes	Pressio® Seal BlackLine EPDM	Pressio® Individual
Core bore min/max	50 - 600 mm	50 - 2000 mm	125 - 600 mm	80 - 350 mm	40 - 3000 mm
Material pressure plate	V2A	V2A V4A on request	V2A	PA 6-30	Standard V2A, V4A / Epoxy coating on request
Rubber quality	EPDM	EPDM	EPDM	EPDM	EPDM EPDM with KTW/W 270* NBR (Nitrile) Silicone
Temperature	-30°C up to +120°C	-30°C up to +120°C	-30°C up to +120°C	-30°C up to +80°C	EPDM -30°C up to + 120°C NBR -30°C up to + 70°C Silicone -55°C bis + 200°C
Pressure rating	3.0 bar. held in place up to 5.0 bar	3.0 bar. held in place up to 5.0 bar	3.0 bar. held in place up to 5.0 bar	1.5 bar	1.5 bar**
Rubber thickness***	40 mm	40 mm	80 mm	40 mm / 80 mm	up to core hole 800 mm 1 x 40 mm rubber for core hole 800 mm and larger: 2 x 40 mm rubber
Rubber durometer, Shore A	45 ± 5	55 ± 5	45 ± 5	45 ± 5	Standard EPDM, EPDM with KTW ELL/W 270 and NBR 50 ± 5 Silicone 50 ± 5
UV-resistance	good	good	good	good	EPDM good NBR bad

Values for pressure rating at 23°C. At higher temperatures, a holding fixture has to be installed.

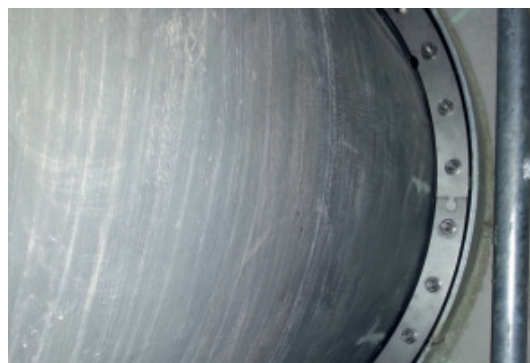
* EPDM-KTW rubber tested accord. KTW drinking water test and W270.

** For annular spaces >100 mm, the seal should be held in place by further accessories.

*** Tolerance ± 1 mm



Further Pressio seal types are also available on request.



Seal with
fix-loose flange



Holding fixture M6 and M8



Pressio® individual, split, potable water, non centric

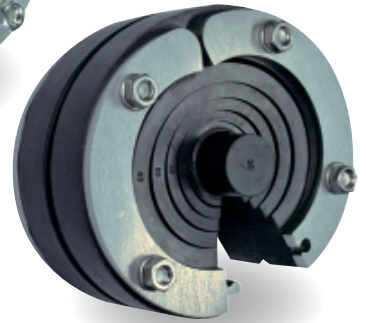
Pressio® Universal Seals 4 pipes



closed standard



split snap
in closure



Pressio® Universal Seals can be used as a blind seal or single duct. Because of its soft rubber the Pressio Universal Seals are especially suitable for plastic pipes. The sealing range for the duct of a pipe/cable is stepped with rubber blades and therefore usable for various outside diameters.

Advantages

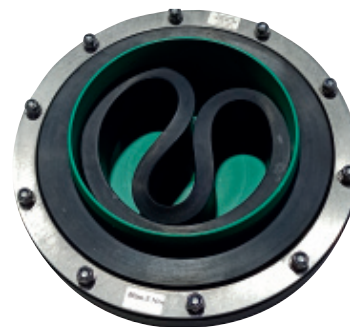
- 5 seals for 80% of the popular pipe sizes
- stock levels can be kept low
- fast mounting
- blade technology with large application range
- split version with snap-in closure
- double sealing
- extendable with extension rings 4 pipes

Installation instructions

1. Count rings to be removed accord. to carrier pipe diameter
2. To cut off the blades, they have to be pressed to the back by hand or using a screwdriver.
3. Cut into the remaining rubber 'skin' at the blade edge
4. The blade can be drawn off by hand

Pressio® Universal Seals are not a pipe support or a fixed point.

Further Pressio® Universal Seal types (e.g. with extra-large flange) are also available on request.



Pressio® Universal
KB 250 mm and KB 300
closed

Technical data	
Material pressure plate	V2A
Rubber thickness*	40 mm
Rubber quality	EPDM
Rubber grade, Shore A	45 ± 5
Temperature	-30°C up to +120°C

* Tolerance ± 1 mm



Installation video

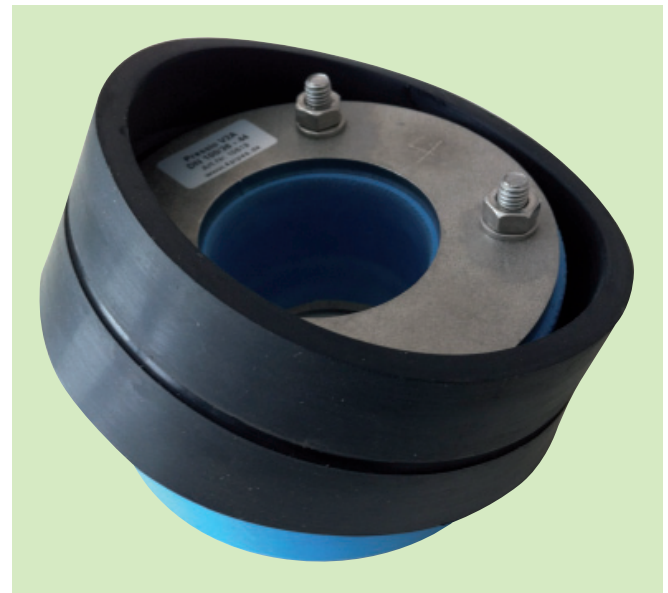
Pressio® Universal Seals 4 pipes



Ø in mm	Product		Art.-No.
100		<p>Pressio® UNIVERSAL OD 100 mm, closed</p> <p>For carrier pipe OD: 18 up to 65 mm in 5 mm steps per ring</p> <p>Pressure rating as blind closure: 1.5 bar</p> <p>Pressure rating with carrier pipe: 1.5 bar</p> <p>Supplied incl. blind plug</p>	10490
100		<p>Pressio® UNIVERSAL OD 100 mm, closed with extra large flange</p> <p>For carrier pipe OD: 18 up to 65 mm in 5 mm steps per ring</p> <p>Pressure rating as blind closure: 1.5 bar</p> <p>Pressure rating with carrier pipe: 1.5 bar</p> <p>Supplied incl. blind plug</p>	10488
100		<p>Pressio® UNIVERSAL OD 100 mm, split</p> <p>For carrier pipe OD: 18 - 20, 25, 32, 40, 50, 63 mm</p> <p>Pressure rating as blind closure: 1.5 bar</p> <p>Pressure rating with carrier pipe: 1.5 bar</p> <p>Supplied incl. blind plug</p>	10499
150		<p>Pressio® UNIVERSAL OD 150 mm, closed</p> <p>For carrier pipe OD: 32, 40, 50, 60.3 up to 63 mm, 75 up to 76.1 mm, 88.9 up to 90 mm, 110 mm</p> <p>Pressure rating as blind closure: for low external water pressure</p> <p>Pressure rating with carrier pipe: 1.0 bar</p> <p>Supplied incl. blind plug</p>	10495
200		<p>Pressio® UNIVERSAL OD 200 mm, closed</p> <p>For carrier pipe OD: 110, 125 mm, 139.7 up to 140 mm, 160 mm</p> <p>Pressure rating as blind closure: for low external water pressure</p> <p>Pressure rating with carrier pipe: 1.0 bar</p> <p>Supplied incl. blind plug</p>	10493
250		<p>Pressio® UNIVERSAL OD 250 mm, closed</p> <p>For carrier pipe OD: 200 mm</p> <p>Reduction rings for carrier pipe OD: 160, 180 mm</p> <p>Pressure rating as blind closure: for low external water pressure</p> <p>Pressure rating with carrier pipe: 0.5 bar</p> <p>Supplied incl. reduction rings and PP blind plug</p>	10496
300		<p>Pressio® UNIVERSAL OD 300 mm, closed</p> <p>For carrier pipe OD: 250 mm</p> <p>Reduction rings for carrier pipe OD: 200, 225 mm</p> <p>Pressure rating as blind closure: for low external water pressure</p> <p>Pressure rating with carrier pipe: 0.5 bar</p> <p>Supplied incl. reduction rings and PP blind plug</p>	10497

The above-mentioned values refer to a pressure tightness rating at an operating temperature of 23°C.
If the temperature is different, especially higher, a holding fixture has to be mounted.

Pressio® Extension-Rings 4 pipes



Product description:

Pressio® Extension-Rings serve as an easy, save and cost-effective feature to **extend and adapt existing standard Pressio®-Wall-penetration seals 4 pipes to more unusual wall sleeve or core hole diameters.**

The outside diameter of a standard seal is built up with the extension rings. An individually cut seal is not always necessary any more.

This facilitates cost-effective stockkeeping, even for uncommon seal sizes.

Pressio® Extension-Rings are made of high quality, extra soft Shore A 43 ±5 EPDM, similar to the Pressio 4 pipes standard seals.

The **integrated groove and tongue** works acc. to the principles of a modular system, ensuring a secure hold of the ring. In this way, the Pressio® Extension Ring maintains the principle of the double-sealing wall penetration seal. Seals with the Extension Rings are tight against high external water pressure up to 1.5 bar.

The application

of the Pressio®-Extension-Rings is very easy.

The ring with a corresponding inner diameter is **just pulled over a standard Pressio® seal. The groove and tongue system should snap in!**

Afterwards the complete **seal is mounted like a standard Pressio® seal according to the application manual.**


Attention, because of the groove and tongue system, the Extension-Rings are **only compatible to original Pressio®-Wall Penetration Seals 4 pipes with ONE groove!**

For Pressio® OD	Extension to	Description	Art. No.
50 mm	58-60 mm	Pressio® - Extension 50 mm to 60 mm	08015
70 mm	75-79 mm	Pressio® - Extension 75 mm to 59 mm	08020
80 mm	85 mm	Pressio® - Extension 80 mm to 85 mm	08000
80 mm	90 mm	Pressio® - Extension 80 mm to 90 mm	08001
80 mm	93 mm	Pressio® - Extension 80 mm to 93 mm	08002
100 mm	103.6 mm	Pressio® - Extension 100 mm to 103.6 mm	08010
100 mm	110 mm	Pressio® - Extension 100 mm to 110 mm	08011
100 mm	118-120 mm	Pressio® - Extension 100 mm to 118-120 mm	08012
100 mm	125 mm	Pressio® - Extension 100 mm to 125 mm	08013
150 mm	158-160 mm	Pressio® - Extension 150 mm to 158-160 mm	08030

Do you sometimes have a number of non-standard core-drill holes, wall sleeve IDs or pipe IDs? Then get in touch with us – we will manufacture extension rings for your specific application.







MFPA Leipzig GmbH
Testing, Monitoring and Certification Office for
 Construction Materials, Products and Systems
 Building Division V – Civil and Underground Engineering
 Prof. Dr.-Ing. Olaf Seife
 Work Group 5.1 - Structural Sealing

Investigation Report UB 5.1/12-665

dated December 20, 2012
 1st copy

Subject matter: *Pressio Wall Penetration Seal and Wall Sleeve of fibre cement -
 Checking the Tightness When Installed*


Client: 4 pipes GmbH
 Sigmundstraße 182
 90431 Nürnberg

Processor: Dipl.-Ing. Jüling

This document consists of 4 pages and one annex.

This report may only be distributed in its unbridged form. Any publication – even in excerpts – requires the prior written consent of MFPA Leipzig GmbH. The legally binding item is the written German form with original signatures and original stamp of the parties/entities entitled to sign.

The general terms and conditions of MFPA Leipzig GmbH apply.



Test laboratory accredited by DAKKS GmbH according to DIN EN ISO/IEC 17025. The accreditation applies to the test methods listed in the certificate (marked by * in this document). The certificate can be seen online: www.4pipes-leipzig.de

Speziallabor für Bauteilprüfung und Prüfungsstelle für die Bauteileprüfung Leipzig GmbH (MFPA Leipzig GmbH)

State: Home-Office: St. 29 – 34019 Leipzig/Germany
 Managing director: Prof. Dr.-Ing. Olaf Seife
 Commercial register: County Court of Leipzig HRB 17719
 VAT No.: DE 253220488
 Tel.: +49 (0) 341 - 6686-0
 Fax: +49 (0) 341 - 6686-118

Please find the complete certificate at www.4pipes.de

IAF - Radioökologie GmbH

Labor für Radionuklidanalytik | Radiologische Gutachten | Consulting

IAF - Radioökologie GmbH • Wilhelm-Rönsch-Str. 9 • 01454 Radeberg

4 pipes GmbH
 Sigmundstrasse 182
 90431 Nürnberg

IAF - Radioökologie GmbH
 Wilhelm-Rönsch-Str. 9
 01454 Radeberg
 Telefon: (03528) 48730-0
 Telefax: (03528) 48730-22
 e-Mail: info@iaf-dresden.de

Radeberg, 2014-03-17

Certificate

Radon Diffusion Coefficient

The radon diffusion coefficient D of the delivered material as a part of the sealing system "Pressio-Rings" has been measured for the company

4 pipes GmbH
 Sigmundstraße 182
 90431 Nürnberg.

The results are described in the following table.

Description of variables	Measured values
Diffusion coefficient D	1,04 · 10 ⁻¹⁶ m ² /s
Diffusion length L _D	7,04 mm
Thickness of the material d	40,0 mm
Area of the Material F	101 cm ²
Test parameter R = d/L _D	5,68
Result	R > 3, radon tight

The material is characterised as "radon tight" if its thickness exceeds the associated radon diffusion length of the material at least by a factor 3.


 Dr. rer. nat. habil. Hartmut Schulz
 managing director

Durch die Deutsche Akkreditierungsstelle GmbH nach DIN EN ISO/IEC 17025:2005 akkreditiertes Prüflaboratorium.
 Die Akkreditierung gilt für die in der Urkunde aufgeführten Prüfverfahren.

Geschäftsführer:
 Dr. rer. nat. habil. Hartmut Schulz

Bankverbindung
 HypoVeranstaltbank Dresden
 BIK: 2512030300000000170429
 SWIFT (BIC): HYVEDE3303

Handelsregister: HRB 9185
 Amtsgericht: Dresden